

# How to Install PostScript® Printers, Printer Drivers and PPDs

for Windows workstations

**Successful desktop publishing** on the Windows or Macintosh platforms **requires PostScript compliance:**

- PostScript laser or inkjet printer
- PostScript fonts
- Adobe Type Manager ver. 4.1 to manage fonts
- PostScript compatible page layout (desktop publishing) software
- PostScript compatible graphics (drawing) software
- Graphic files in EPS (encapsulated PostScript) format for vector graphics, and TIF format for bitmapped images such as photos.

Most desktop publishing problems with fonts, graphics and text reflow are resolved by installing the correct PostScript printer drivers on your workstation. Remember, since your desktop publishing files will be transmitted to the print shop's service bureau for high-resolution film output, these problems can cost you hundreds of dollars in additional film and labor at the service bureau, in addition to substantially delaying your job.

This section shows how to correctly install and configure a PostScript printer on a Windows workstation so that you can minimize these costly problems.

**Note:** Since these procedures install software drivers on your system, please be sure to check with your IT team about permissions and requirements for changing your workstation.

## Overview

These instructions guide you through the process of installing PostScript printers and PPDs on your Windows workstation because we've found that the regular Windows "Add Printer" command doesn't always install PostScript printers correctly, often leaving out critical drivers or PPDs. It takes two files to properly install a PostScript printer:

- the **Adobe Universal Installer** utility that also contains the PostScript printer driver; and
- the **PPD** (PostScript Printer Definition file) for your specific PostScript laser or inkjet printer.

**Be sure to have both files before continuing with the installation.** Your computer may already have a PostScript printer driver installed. But there's a good chance that it's not configured properly or that the PPDs for your printer is missing or mis-installed.

© 2001, Bevi Chagnon

PubCom  
7417 Holly Ave  
Takoma Park MD 20912  
301 585-8805  
[www.pubcom.com](http://www.pubcom.com)

For additional technical  
information for digital  
media, website  
development and  
desktop publishing, visit  
[www.design-brain.com](http://www.design-brain.com)

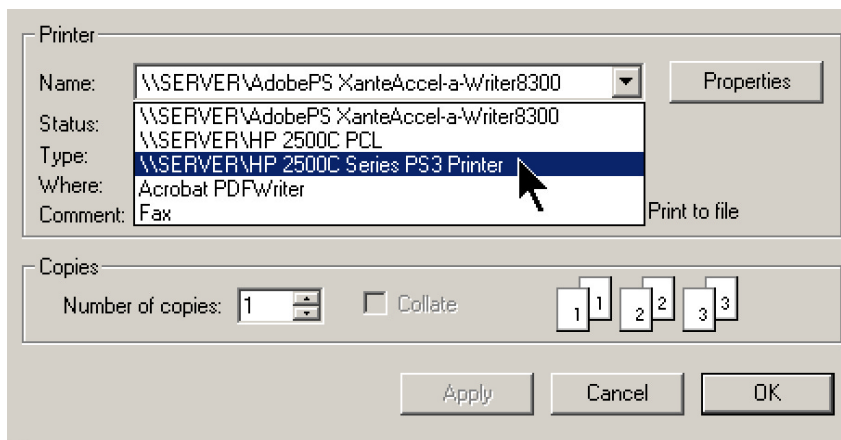
So even if you already have the PostScript driver installed, it's best to download the latest version from Adobe's website and reinstall it. Here's how to check your system to see if the PostScript driver is already installed and which version it is.

#### From Windows Explorer or My Computer:

- Go to the following directory:
  - [Win NT/2000] C:/WINNT/ system32 / spool / drivers
  - [Win 95/98] C:/WIN/ system
- Look for one of the following files (depending upon your operating system, you may need to look inside subfolders to find them):
  - Adobeps4.driv** (PS ver 4 for Win98/95)
  - Adobeps5.dll** (PS ver 5 for WinNT/2000)

#### Sending jobs to a PostScript printer

You'll need to make sure that you USE the printer correctly, too. That means that



when you're in your desktop publishing software and you select the **FILE | Print** command to print your work, you must **select the PostScript version** of your printer from the list of printers, not the regular PCL version of your printer.

Many people will have both a PCL (non-PostScript) driver and a PostScript driver as shown in this example for the HP 2500C printer. So be sure to select the correct version when printing desktop publishing files. Usually the words “**PS**” or

“**PostScript**” will be in the printer's name.

You can use your PostScript printer to print jobs not only from your desktop publishing programs, but also from your regular office programs, such as word processing and email. So you can have just one PostScript printer installed to handle all your printing needs.

#### Instructions

### 1 Make sure you can see file extensions on your computer.

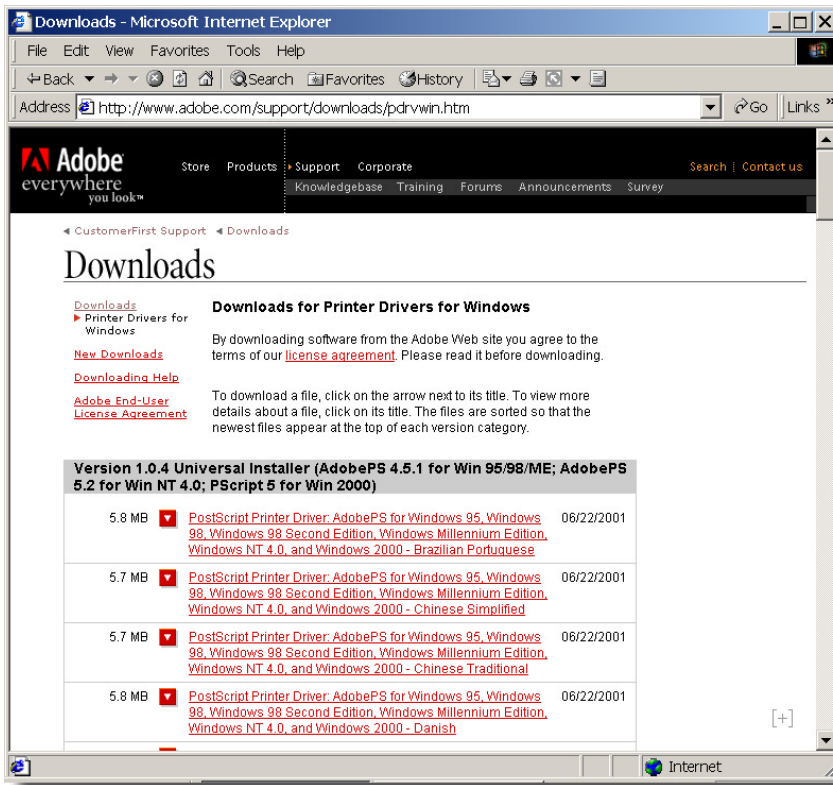
For example, when you view your files in Windows Explorer, if you only see “myfile” rather than “myfile.jpg” you need to adjust Windows to show file extensions.

- In **Windows Explorer** or **My Computer**, select **VIEW | OPTIONS**.
- Then **UNCHECK** the box that says “**Hide file extensions for known file types.**” You do not want the file extensions to be hidden from view.

## 2 Download the latest PostScript printer driver and PPDs

Go to [www.adobe.com/support/downloads/pdrvwin.htm](http://www.adobe.com/support/downloads/pdrvwin.htm) to download the free PostScript driver for your operating system. The latest versions as of 11/2001 is:

- AdobePS 4.5.2 for Windows 95/98/ME
- AdobePS 5.2.1 for Windows NT 4
- PScript 5 for Windows 2000



When you're at Adobe's website, **download the Universal Installer** which is a bundle of all the PostScript versions and an installation utility that automatically installs the correct version of PostScript for your operating system. As of Nov. 2001, that file is **winsteng.exe**, installer ver 1.0.5.

**Note:** Adobe updates this webpage quite frequently, so you might see different listings than those at right. Just look for the latest PostScript driver for your operating system and download it.

**For technical reference** about the Universal Installer (especially if you're running Novell NetWare), refer to Adobe's technical page, [www.adobe.com/support/downloads/8a0e.htm](http://www.adobe.com/support/downloads/8a0e.htm).

### Download PPDs:

From this website, **you also can download PPDs (PostScript Printer Definition files)** for printers. They're located at the bottom of that same webpage. If your PostScript printer is not listed on Adobe's website, then visit your printer manufacturer's website to download the latest PPDs.

**Note:** Many of Adobe's software CD-ROMs, including those for Adobe InDesign 1.5, Illustrator 9, and Adobe Type Manager Deluxe, have PostScript drivers on them, along with the Printer Installer utility for Windows 95/98. If you have these CDs, you can use their drivers.

**Hint:** At our studio, we keep a copy of the latest Universal Installer and the PPDs for all our PostScript printers in a central folder on our file server. This lets us quickly set up a workstation by launching the file server's Universal Installer directly from the workstation, and it also helps us guarantee that all our Windows systems have identical PostScript drivers and PPDs.

## 3 Install the PostScript driver

This step will run the **Universal Installer utility** that will install not only the PostScript driver, but also the PPDs for your PostScript printer. You can install additional PostScript printers at this time, too. Just relaunch the utility again and select your other printer when prompted.

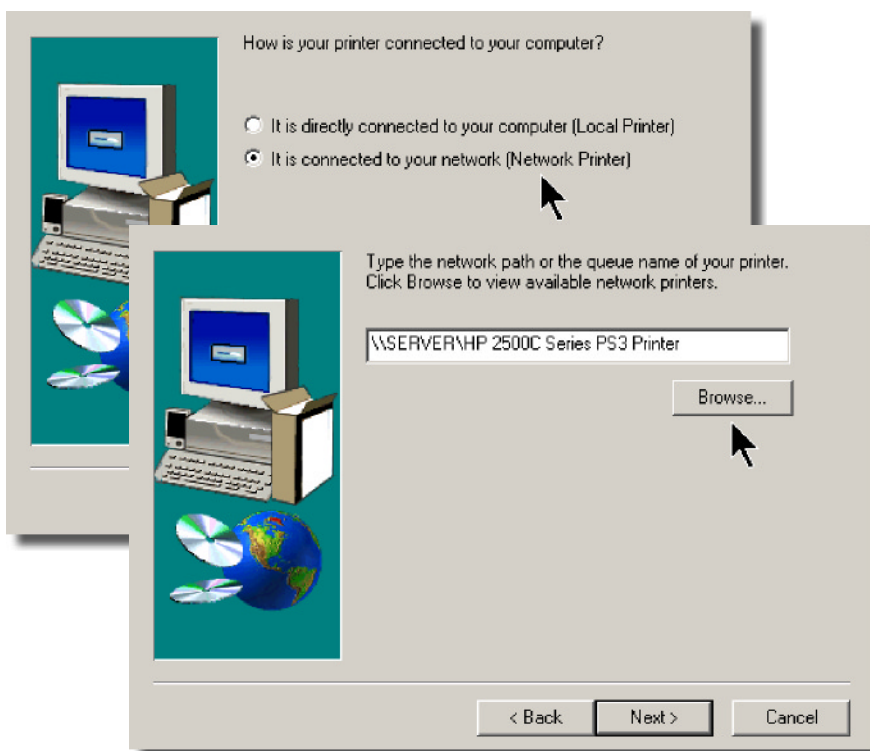
**Desktop publishers** should make sure that the driver for a **generic PostScript imagesetter** is also installed on their workstation so that they can create their DTP files

correctly and prevent text reflow problems. (Imagesetters are the high-resolution film imaging devices used by print shops and service bureaus to create the films that eventually are burned onto printing plates.) We recommend that DTPers install the drivers for a **Linotronic 500, 530 or 630** on their workstations (set to the LPT1 port and default settings) so that they can mimic the settings at service bureaus.

DTPers should also have the drivers for the **Xerox Docutech** and **Xerox DocuColor** high-capacity digital printers which are often used to print small quantities of brochures, booklets and other smaller publications.



- **Double-click on the .exe file** you downloaded from Adobe's website and it will launch the driver installation utility program. As of June 2001, that file is: **winsteng.exe**
- When prompted, **select whether your printer is on a LAN** or directly connected to your workstation (**local**). Note: If you're installing the Linotronic imagesetter driver, select "local."

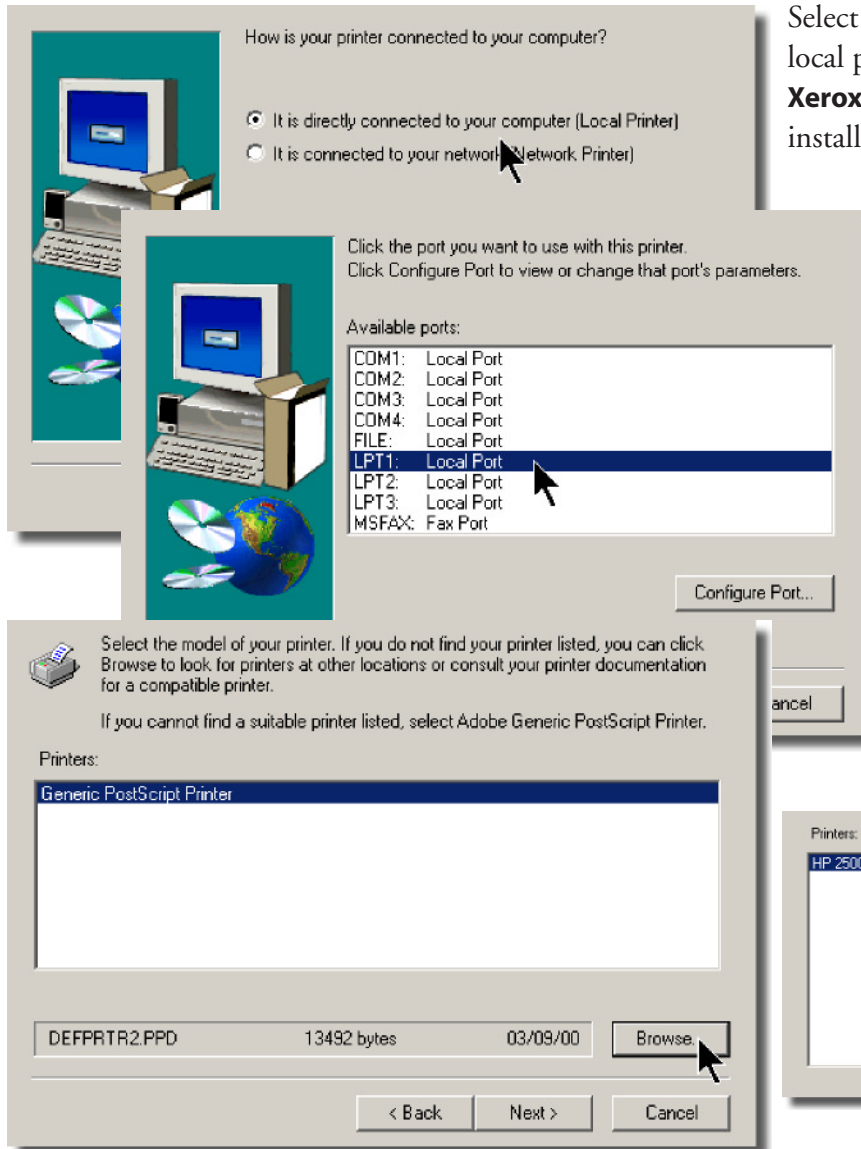


### For network printers...

When prompted, **browse your network to select the printer**. Be sure to select the PostScript version of your printer, not the PCL version. Continue to follow the screen prompts until the installation is complete.

**Note:** If you're installing a networked PostScript printer on a workstation, you may need to first install the printer correctly on your server using this same procedure before you can install it on the workstation.

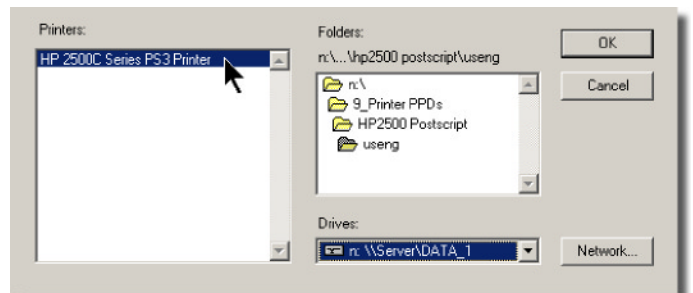
### For local, directly-connected printers:



Select this option when installing the drivers for your local printer and also for **Linotronic imagesetters, Xerox Docutechs and DocuColors**. For most local installations, you'll select the **LPT1 local printer port**.

- When prompted, select the PostScript printer you want to install.
- If your printer is not in the list, then select the **BROWSE** button to navigate to a CD-ROM drive or a location on your computer where the printer manufacturer's software, .INF files or PPDs are located.

Continue to follow the screen prompts until the installation is complete. **To install additional printers**, relaunch the Universal Installer.



## 4 PageMaker users: Copy the PPD into the PM65 / 7 folder.

PageMaker users must follow an additional step—copying, by hand, the PPDs for their PostScript printers (including the Linotronic imagesetter and Xerox Docutechs mentioned previously) into the following folder:

**C:\PM65\RSRC\USENGLISH\PPD4**

or **C:\Program Files\Adobe\PageMaker 7.0\RSRC\USENGLISH\PPD4**

Remember, since the steps outlined above install software drivers on your system, be certain to check with your IT department before you begin. Correctly installing the appropriate PostScript printer drivers on your workstation will resolve many of the desktop publishing problems that involve printers, fonts and text reflow.